



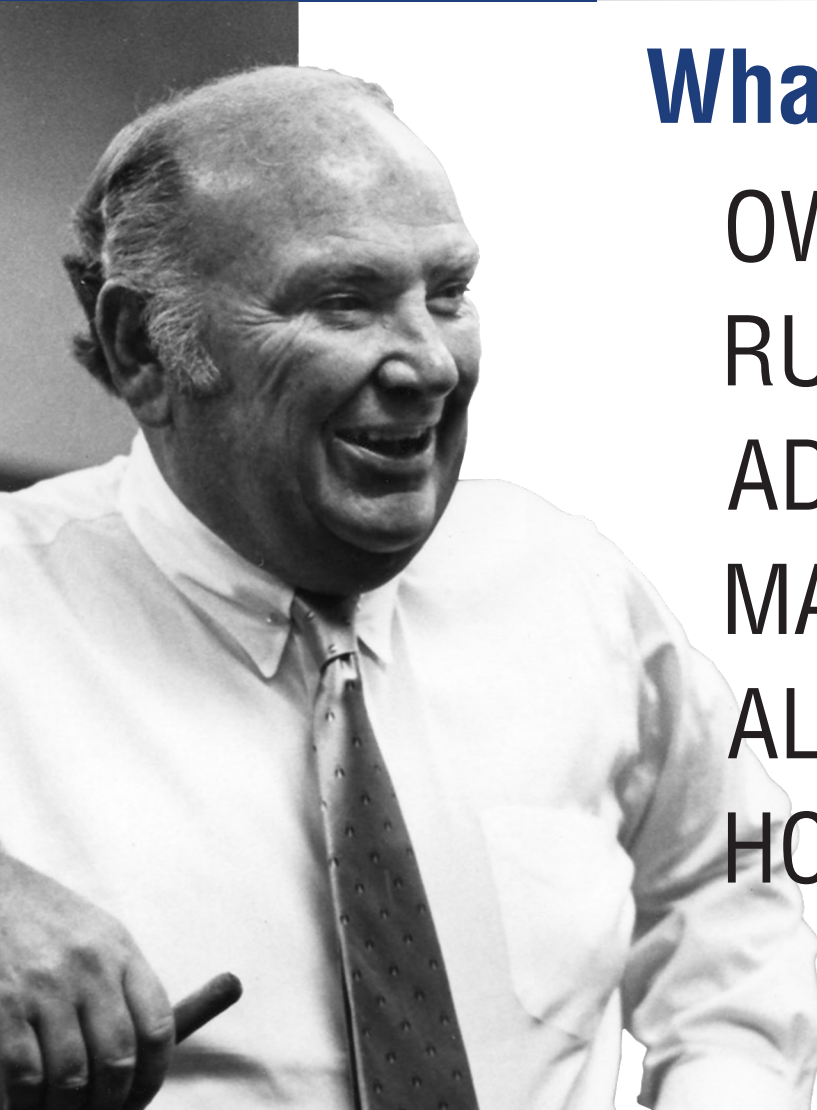
*Martin*

# Synchronous Sprockets



MPC®, HTS®, HIGH HP HTS®  
AND TIMING PULLEYS





# What would Joe do?

**OWN** your own territory and  
take care of our customers

**RUN** your facility and take  
care of our people

**ADD** something to  
the ballgame

**MAKE SURE** you have your  
priorities right

**ALWAYS** back to the basics – quality,  
service, low-cost producer

**HOW** to get big and  
stay small

A handwritten signature in blue ink that reads "Joe Martin". The signature is stylized and cursive.

Established in 1951 in Arlington, Texas, Martin has evolved into a global powerhouse with 30+ strategically located sites. Our unwavering commitment to excellence in power transmission and material handling positions us as a trusted partner globally. At Martin, we offer more than products; we provide precision, personalized service, combining global capability with local care. Experience the Martin difference, where our dedication to quality sets us apart.

#### **Success in Business, Martin's Philosophy:**

Success at Martin requires a strategic mindset — knowing customers, taking ownership, building trust, and cultivating an owner's mentality. Effective leadership involves personal responsibility, positive work culture, visibility, and effective communication. Unlocking success demands creativity, innovation, and resisting the status quo. Aligning priorities with a greater purpose ensures contributions lead to organizational success. Martin emphasizes basics — quality, service, and low-cost production — for streamlined and maximized efforts.

#### **"Get Big, Stay Small" Strategy:**

Martin advises strategic business expansion, discovering scalable avenues while preserving core qualities. Maintaining agility and adaptability in the dynamic market landscape is crucial. In a world full of choices, Martin's commitment to prioritizing personalized service and connections with customers sets us apart from the competition.



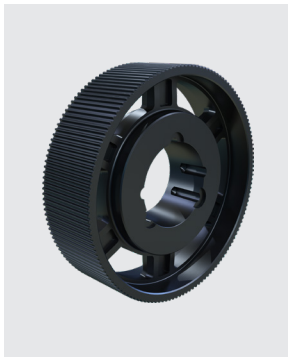
## AVAILABLE IN STOCK

**MPC®**

- compatible with most modified curvilinear belts
- 8mm and 14mm pitches
- QD, TB and minimum plain bore styles
- Air-Cooled heat exchanger
- 22 teeth up to 224 teeth

**BELT WIDTHS**

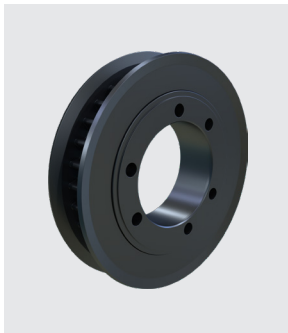
- 8mm pitch: 12, 21, 36, 62
- 14mm pitch: 20, 37, 68, 90, 125

**HTS® – HIGH TORQUE**

- RPP tooth profile, runs with Hawk Pd®, RPP®, RPP+® HTD belts
- 5mm, 8mm, 14mm and 20mm pitches
- QD, TB, and minimum plain bore styles
- 20 teeth up to 216 teeth

**BELT WIDTHS**

- 5mm pitch: 15, 25
- 8mm pitch: 20, 30, 50, 85
- 14mm pitch: 40, 55, 85, 115, 170
- 20mm pitch: 115, 170, 230, 290, 340

**HIGH HP HTS® – HIGH HORSEPOWER**

- RPP tooth profile, runs with: Hawk Pd®, Panther®, QT Power Chain® belts
- 8mm, 14mm pitches
- QD, TB, and minimum plain bore styles
- 22 teeth up to 216 teeth

**BELT WIDTHS**

- Belt widths 8mm pitch: 12, 22, 35, 60
- Belt widths 14mm pitch: 20, 42, 65, 90, 120

**TIMING PULLEY**

- Compatible with trapezoidal tooth belts
- XL, L, H, XH pitches
- QD, TB, and minimum plain bore styles
- 10 teeth up to 120 teeth

## MADE-TO-ORDER

**SPECIALITY**

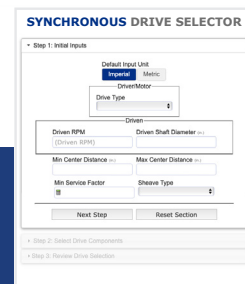
- Special bores
- Custom labeling and kitting
- Staged for scheduled releases from local Martin Plant
- Cast iron and ductile iron poured in Martin's Foundry
- And more...

**MATERIALS**

- Cast Iron
- Ductile Iron
- Carbon steel
- Stainless steel
- Sintered metal
- Aluminum
- Plastic

**FINISHES**

- Nickel
- Zinc
- Cadmium
- Chrome

**ONLINE SYNCHRONOUS DRIVE SELECTOR TOOL**

The Martin Synchronous Drive Selector online tool simplifies the process of finding the right product for you. Simply input your drive specifications, and we'll guide you to the perfect selection. Visit [martinsprocket.com](http://martinsprocket.com) or scan the QR code to explore this and other drive selector tools available.



### MARTIN FOUNDRY

Operating its own foundry enables Martin to provide its customers with quality assurance, quick lead times, and application engineering assistance on cast and ductile iron parts.

With an upper range of 96" in diameter and 10,000 pounds, our own pattern shop, and streamlined access to secondary machining, Martins's comprehensive capabilities serve a broad spectrum of industrial uses.

Scan QR code to watch video:  
**Forge & Foundry**



### SINTERED METAL

Martin's sintered metal plant, located in Paragould, AR, uses a multitude of sintered steel presses to manufacture stock parts in high volumes. Their presses range from 60 Tons to 2000 Tons and average around 750 Tons. Our in house engineering and drafting department allow for flexibility in design and the freedom to create our own tooling for custom parts.

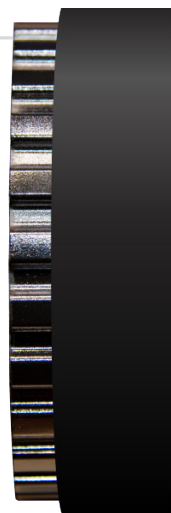
Scan QR code to watch video:  
**Sintered Metal**



### FLANGES

Flanges on synchronous sprockets run parallel to the belt. These flanges act as additional tracking devices, preventing the belt from shifting laterally or moving off course. They provide physical barriers that guide the belt along the intended path, minimizing the risk of belt misalignment.

**WITHOUT  
FLANGES**



**WITH  
FLANGES**

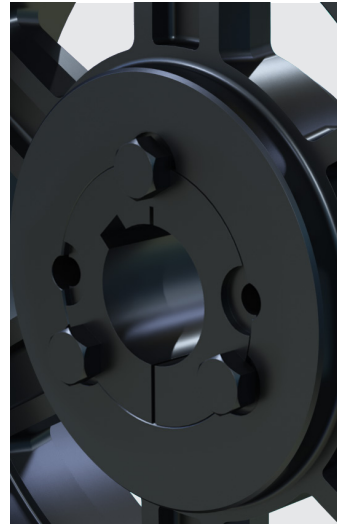


## BUSHINGS



### QUICK DETACHABLE (QD)

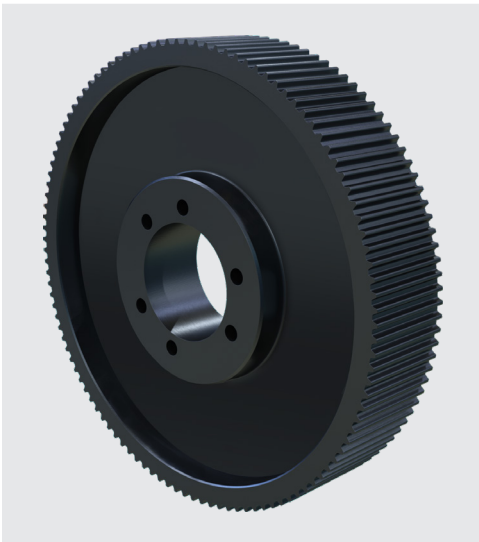
- Offers faster replacement.
- Single split through both the barrel and flange.
- No damage to shaft upon removal.
- Compatible with both conventional and reverse mounting.



### TAPER BUSHINGS (TB)

- Flush-mount for smaller equipment footprint.
- Single split through the barrel while the screws are used to tighten it to the shaft.
- There is no damage to the shaft upon removal.

## CONSTRUCTION



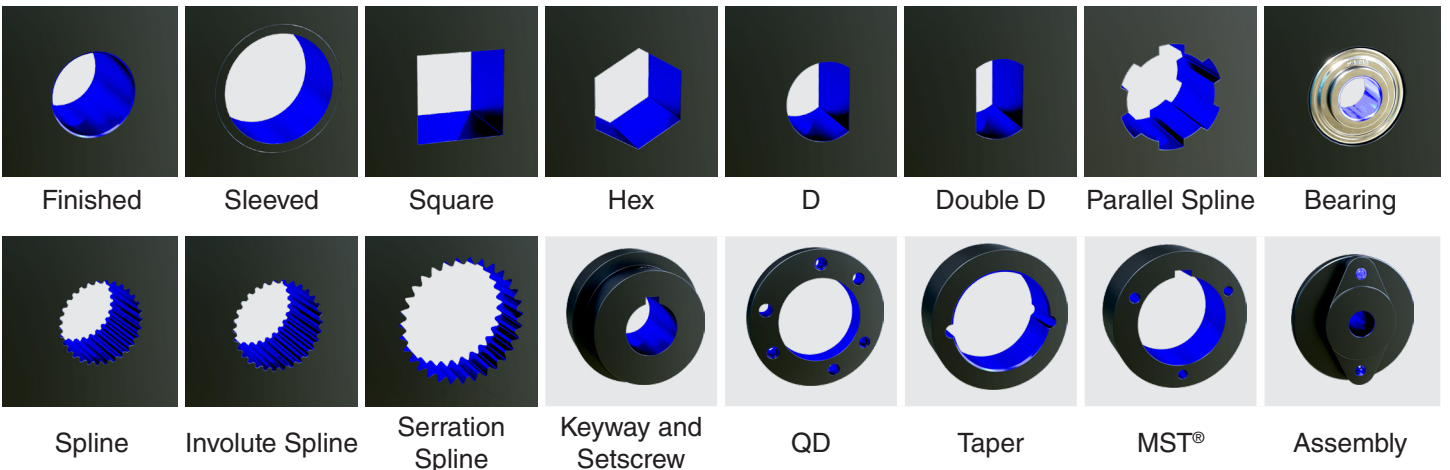
### BEFORE

In this example constructing the synchronous sprocket with a spoked pattern resulted in a 48% decrease in the overall weight of the completed part.



### AFTER

## AVAILABLE CUSTOM BORE OPTIONS

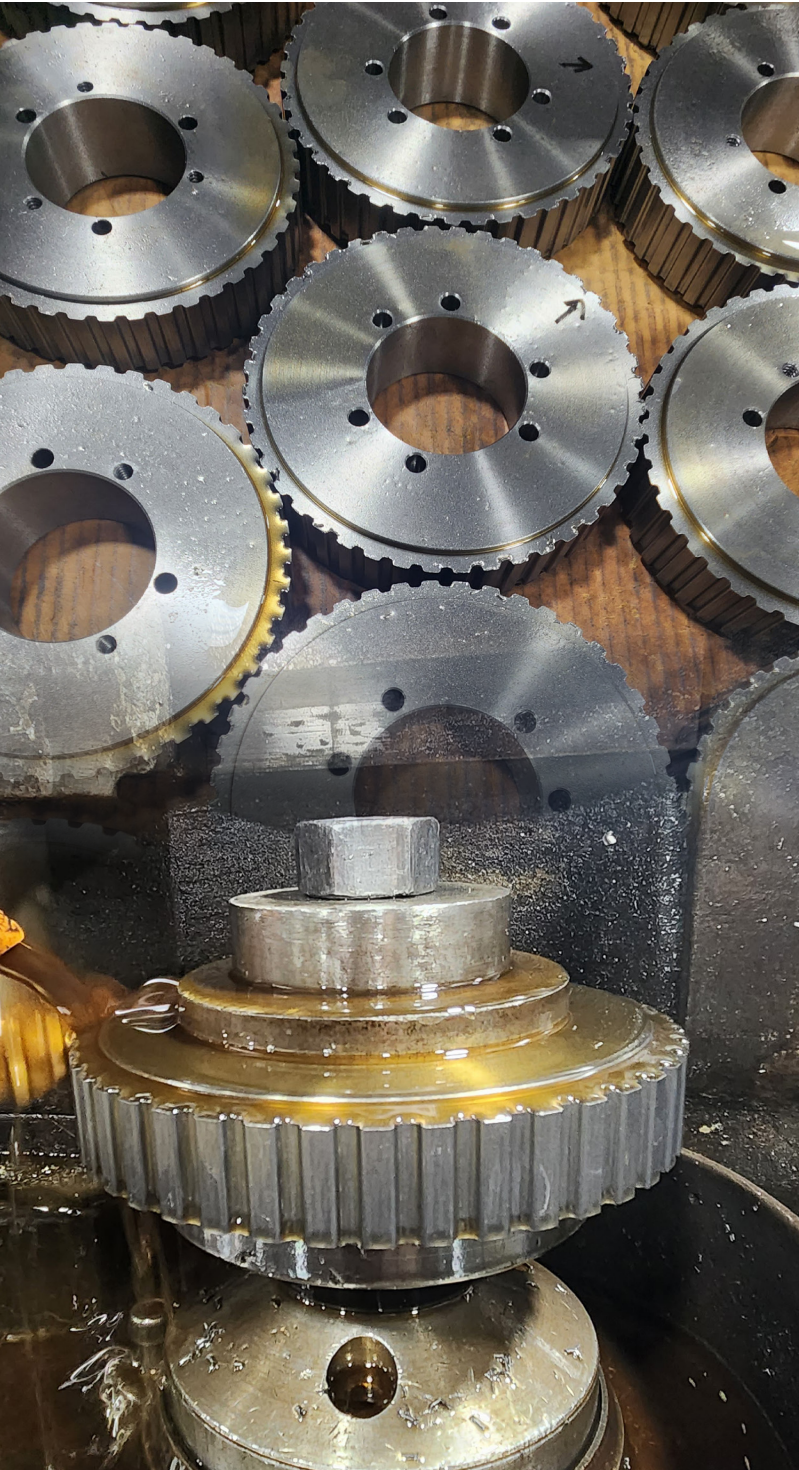




## POWERING INDUSTRIES SINCE 1951

Unlock the pinnacle of industrial excellence with Martin, your trusted partner in custom synchronous drive engineering. For over seven decades, we've been at the forefront of innovation, crafting bespoke solutions that stand the test of time.

Elevate your industrial experience with Martin – where precision meets performance, and innovation meets reliability. Unleash the power of custom synchronous sprockets designed to propel your industry forward. Choose Martin, choose excellence.



### UNMATCHED INVENTORY

---

With the largest power transmission stock in North America, find the perfect fit for your needs, always exceeding expectations.

### TAILORED TO PERFECTION

---

Crafting made-to-order synchronous sprockets for unique industrial needs. Diverse materials, shaft options, and assemblies bring your vision to life.

### QUALITY ASSURED

---

Backed by a solid one-year warranty\*, Martin ensures top-tier reliability and durability in every product.

### RAPID RESPONSE, SWIFT SOLUTIONS

---

Quick alterations and manufacturing across locations guarantee the industry's fastest lead times for made-to-order products. Your deadlines, our priority.

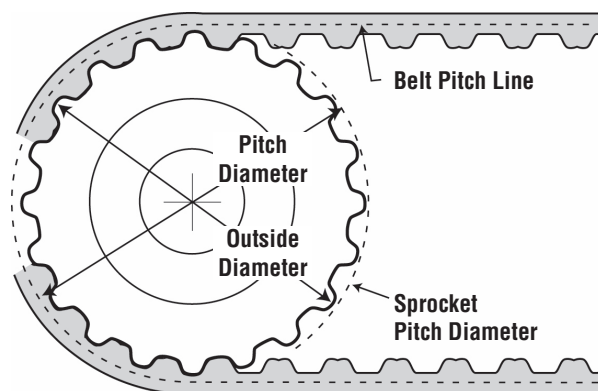
### A PERSONAL TOUCH TO EVERY ORDER

---

Beyond products, Martin is your dedicated partner in success. Experience precision, performance, and reliability. Choose Martin, choose excellence.

\* Conditions apply, check our Limited Warranty at <https://martinsg.info/terms>

## NOMENCLATURE



## MPC®

Tooth profile compatible with most popular modified curvilinear belts

## Bushing Options

**PB** Minimum Plain Bore  
 No prefix Taper Bushed or QD

**PB 8MX 22S 12 - SH**

## Bushing Option

**QD** JA, SH, SDS... S  
**TB** 1008, 1108... 120100

## Belt Pitch

**8mm**  
**14mm**

## Belt Width (mm)

12, 21, 36, 62  
 20, 37, 68, 90, 125

## Number of Teeth

S identifies it as an MPC

## HTS®

RPP tooth profile, runs with:  
 Hawk Pd®, RPP®, RPP+® HTD belts

**P 30 14M 55 - SK**

## HTS®

## Number of Teeth

Bushing  
or MPB

## Belt Pitch

**5mm** ..... 15, 25  
**8mm** ..... 20, 30, 50, 85  
**14mm** ..... 40, 55, 85, 115, 170  
**20mm** ..... 115, 170, 230, 290, 340

## Belt Width (mm)

## HIGH HP HTS®

RPP tooth profile, runs with:  
 Hawk Pd®, Panther®, QT Power Chain® belts

**W 24 8M 22 - JA**

## High HP HTS®

## Number of Teeth

Bushing  
or MPB

## Belt Pitch

**8mm** ..... 12, 22, 35, 60  
**14mm** ..... 20, 42, 65, 90, 120

## Belt Width (mm)

## TIMING PULLEYS

Tooth profile compatible with trapezoidal tooth belts

## TB Bushing

If listed, denotes that pulley is bored  
 and drilled to accept TB bushing.

**TB 18 L 100 JA**

## Bushing Option

**QD** JA, SH, SDS... S  
**TB** 1008, 1108... 120100

## Number of Teeth

## Belt Pitch

**XL** Extra Light 1/5"    **H** Heavy 1/2"  
**L** Light 3/8"    **XH** Extra Heavy 7/8"

## Belt Width

**037** 3/8"    **150** 1 1/2"  
**050** 1/2"    **200** 2"  
**075** 3/4"    **300** 3"  
**100** 1"    **400** 4"





Phone: 817.258.3000

Fax: 817.258.3333

[martinsprocket.com](http://martinsprocket.com)